



 paulwallace

Esdaile Hall, Hoddesdon, EN11 8FD |
£250,000 | Leasehold

Esdaile Hall, Hoddesdon, EN11 8FD

This top-floor retirement apartment features two double bedrooms and is conveniently serviced by a lift to all floors. Situated within walking distance of Hoddesdon Town Centre, residents will appreciate its proximity to a plethora of shops, restaurants, and excellent transport links. The property is offered chain-free and boasts a superb kitchen with integrated appliances, as well as an exceptionally spacious and recently refitted shower room / w.c. Additional features include gas central heating, double glazed windows, and ample living accommodation. Residents can also enjoy the amenities of a communal lounge, laundry room, and garden.

Key features

- Two double bedrooms
- Retirement apartment
- Chain-free
- Spacious refitted shower room / w.c.
- Top floor with lift access
- Walking distance to Hoddesdon Town Centre
- Superb kitchen with integrated appliances
- Communal lounge, laundry room, and garden



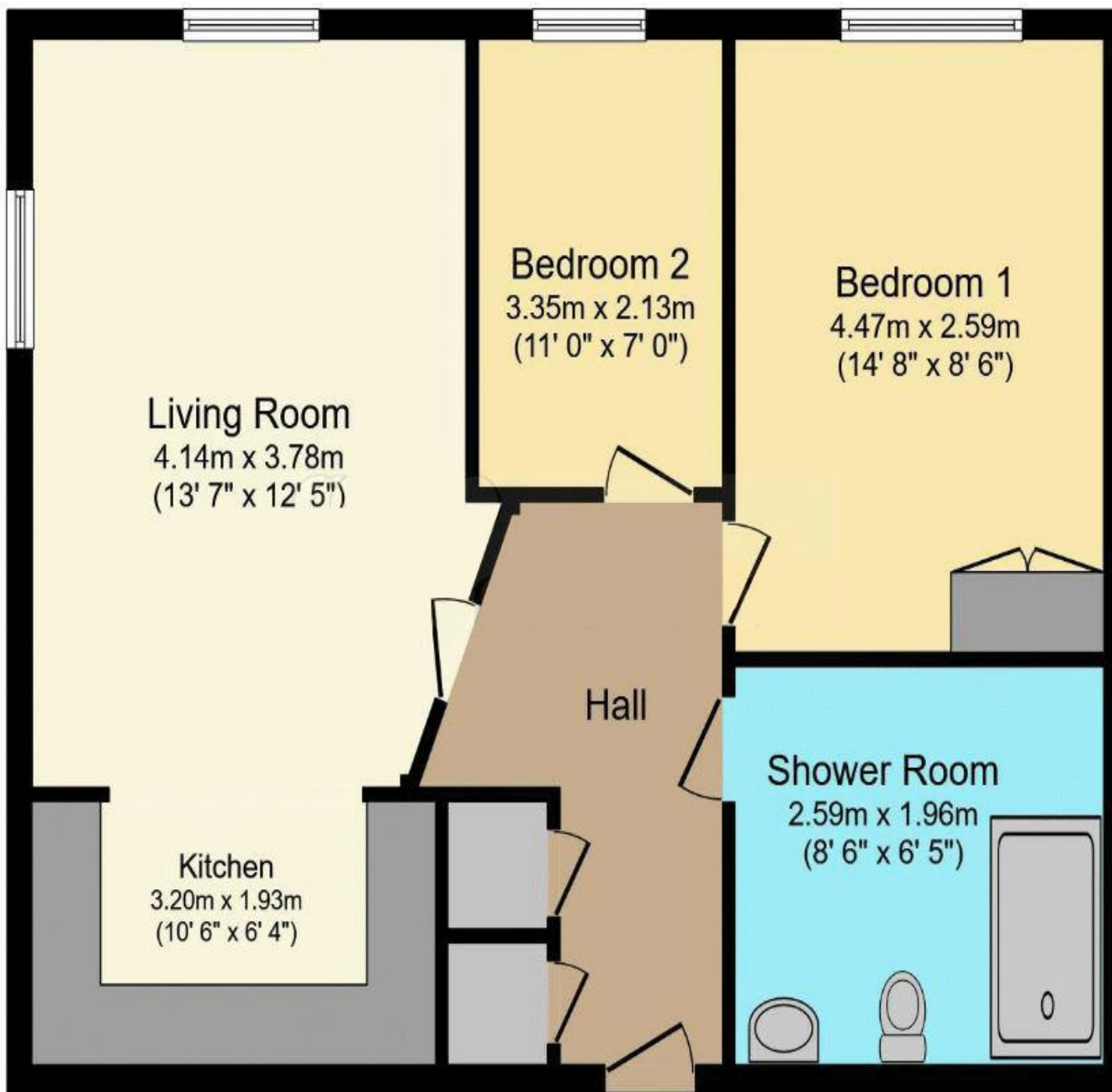
 paulwallace
estate agents

hoddesdon@paulwallace.co.uk

01992 466471







Total floor area 71.4 sq.m. (769 sq.ft.) approx

This floorplan is for illustrative purposes only and is not drawn to scale. Measurements, floor-areas, openings and orientations are approximate. They should not be relied upon for any purpose and do not form any part of an agreement. No liability is taken for any error or mis-statement. All parties must rely on their own inspections.





 paulwallace

Registered Address: Unit 3 The Brookfield Centre, Cheshunt, Herts, EN8 0NN Company Registration Number: OC414280 | VAT Number: 276958046©2022 Paul Wallace Group LLP trading as Paul Wallace Estate Agents



Paul Wallace Estate Agents

70 High Street
Hoddesdon
Hertfordshire
EN11 8ET

 01992 466471

 hoddesdon@paulwallace.co.uk

 www.paulwallace.co.uk



Opening Times

Mon	9am to 6.30pm
Tues	9am to 6.30pm
Wed	9am to 6.30pm
Thurs	9am to 6.30pm
Fri	9am to 6.30pm
Sat	9am to 5.00pm
Sun	Closed

 paulwallace
estate agents

Agents Note: Whilst every care has been taken to prepare these sales particulars, they are for guidance purposes only. All measurements are approximate and are for general guidance purposes only and whilst every care has been taken to ensure their accuracy, they should not be relied upon. Potential buyers are advised to recheck the measurements.